

Tested version since 2021!

You get this version free for 30 days! Have any question? Visit <https://prokassa.nl/>

WinKassa.nl provides free versions of its software “as is” **and without any warranty.** WinKassa.nl **shall not be liable for any data loss, system errors, security issues, or other technical malfunctions arising from the use of any free version.** The end user is solely responsible for verifying the integrity and security of all downloaded files, including performing virus and malware scans prior to use.

WinKassa / WinRetail POS

User Manual

1. System Requirements

- WinKassa.nl Light
 - Compatible with **all Windows versions**, including **Windows 11**
-

2. Installation

1. Open the ZIP file
 2. Copy the **BircanWKL** folder to C:\
 - Example: C:\BircanWKL
 3. From C:\BircanWKL, locate **BircanWKL.exe** and:
 - Create a **desktop shortcut**, or
 - Pin it to the **taskbar**, or
 - Add it to **favorites**
-

3. Reset Sample Data (Products & Sales)

The software includes sample products and groups for demonstration purposes. You may review, use, or delete them.



To reset sample data:

1. From the admin main screen:
 - Menu **9 – Extra**
 - **3 – Data**
 - **11 – Reset Data**
2. Select **YES** when prompted
3. In the reset window:
 - Select rows **3, 4, and 5**
 - (After the first two yellow rows, select the three orange rows)
4. Click the **red triangle** on the right
5. Confirm again with **YES**


The data will be deleted successfully.

4. Company Registration Details

Before entering your own products, complete the registration details.

Registrant

winKASSA.nl

Select an image 

OK Cancel

General Fiscal iWe Bank Place License User Invoice Number

WinKassa Software Licensed for;

Company Phone

Name Fax

Surname

Address Mobile Nr:

Post Code City

Country: Continent:

Header

Invoice Header

1. Menu **1** – **File**
 2. **7** – **User / Registrant**
 3. Enter:
 - City
 - Postal Code
 - Country
 4. Save using **F5** or **OK**
-


5. Language Settings


winKassa.nl Settings


winKASSA.nl


OK ✓ Cancel ✗


General Language VAT% Payment Method EPD Cash drawer Display Printer


 French

 English

 Dutch

 German

 Turkish

 Italian

1. Menu **9 – Extra**
2. **5 – Settings**
3. Open **Language (Tab 2)**
4. Select your preferred language
5. Save with **F5** or **OK**

6. VAT (Tax) Configuration

- There is **no limit** to the number of VAT rates.

winKASSA.nl Settings

General Language **VAT%** Payment Method EPD Cash drawer Display Printer

TAX Rate	VAT Label
0	Verpakking
9	Laag / Food
21	Hoog / Non Food

Delete

VAT Percentage

☐ Automatically change sales price

☐ Change group VAT rates automatically

OK Cancel

To configure VAT rates:

1. Menu **9 – Extra**
2. **5 – Settings**
3. **VAT (Tab 3)**
4. Enter:
 - VAT percentage in the left column
 - Description in the right column
5. Save with **F5** or **OK**

7. Receipt / Ticket Settings

winKASSA.nl Settings

General Language VAT% Payment Method EPD **Cash drawer** Display Printer

Cash Drawer Configuration

Opening Amount of Cash Register

☐ Cash and Save button (Not Open Cash Drawer)

Type Port: COM

Port number: 1

Bauds Rate: 19200

Ticket Title / Header

Name

Address

Post Code ,City

Tel:

Bottom message

Line 1 Bottom

Line 2 Bottom

Line 1 Bottom

Line 2 Bottom

OK Cancel

7.1 Receipt Header

1. Menu **9 – Extra**
2. **5 – Settings**
3. **Cash Drawer (Tab 6)**

Ticket Title / Header

- Store name
- Address
- Postal code and city
- Phone number

Note: Store names longer than **20 characters** may not display correctly
(This limitation is removed in the Pro version.)

Bottom Message

- Return policy
- Social media links
- Custom customer messages

Save using **F5** or **OK**

8. Customer Display Settings

The screenshot shows the 'winKASSA.nl Settings' window. The 'Display' tab is selected in the top navigation bar. The main title is 'Customer Display Configuration'. Below this, there is a 'Display Port Name' dropdown menu set to 'COM1' and a 'Test Display Port' button. To the right, there is a checkbox for 'Activate VGADisplay' which is currently unchecked. Below these options, there is a section for 'Customer Display Message' with a 'Max: 2x20 Chr' limit. This section contains two input fields labeled 'Line 1' and 'Line 2'. The 'Line 1' field contains the text 'Welcome to' and the 'Line 2' field contains the text 'Your Shop Name'. In the top right corner of the window, there are 'OK' and 'Cancel' buttons.

Supported displays:

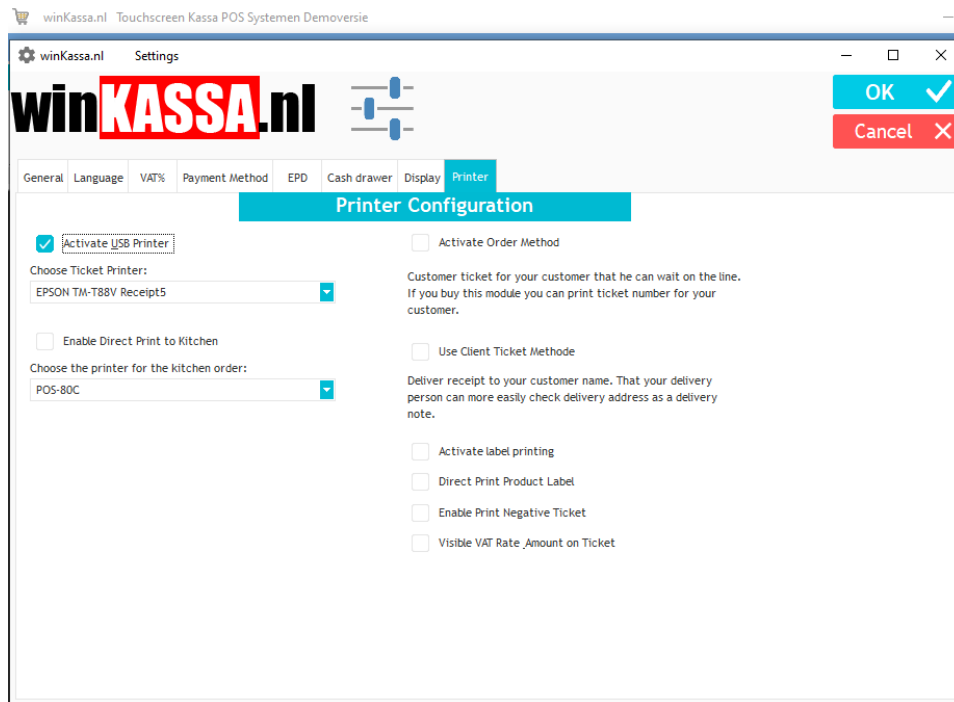
- Serial Display
 - VGA Display
1. Menu **9 – Extra**
 2. **5 – Settings**
 3. **Display (Tab 7)**
- Select the COM port connected to the customer display
 - Maximum **20 characters per line**

Example:

Welcome to
Your Shop Name

Save with **F5** or **OK**

9. USB Printer Configuration

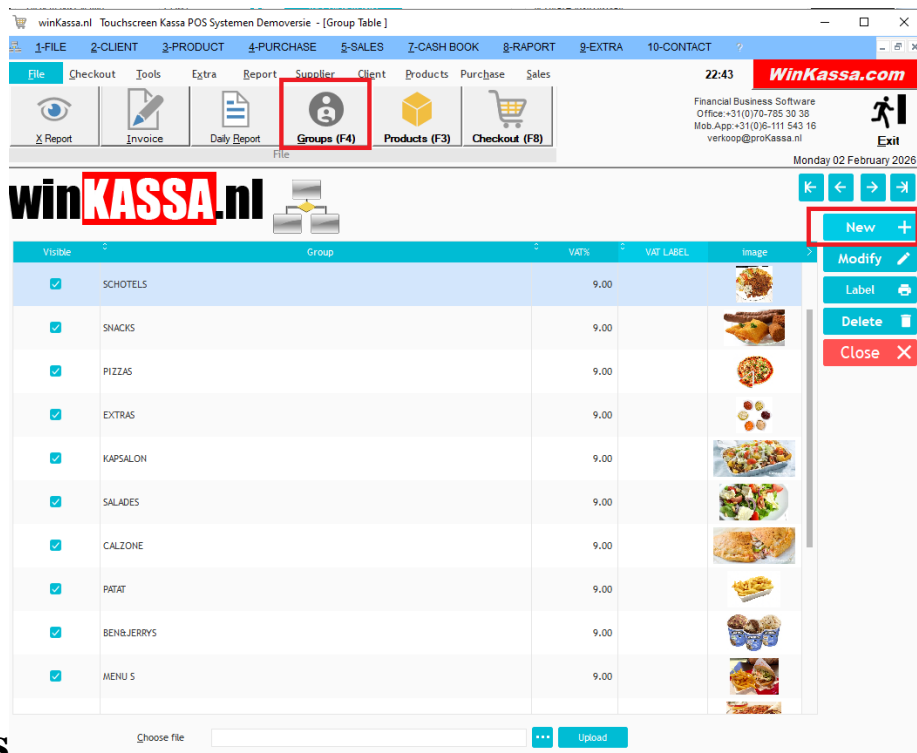


1. Menu **9 – Extra**
2. **5 – Settings**
3. **Printer / Display (Tab 7)**

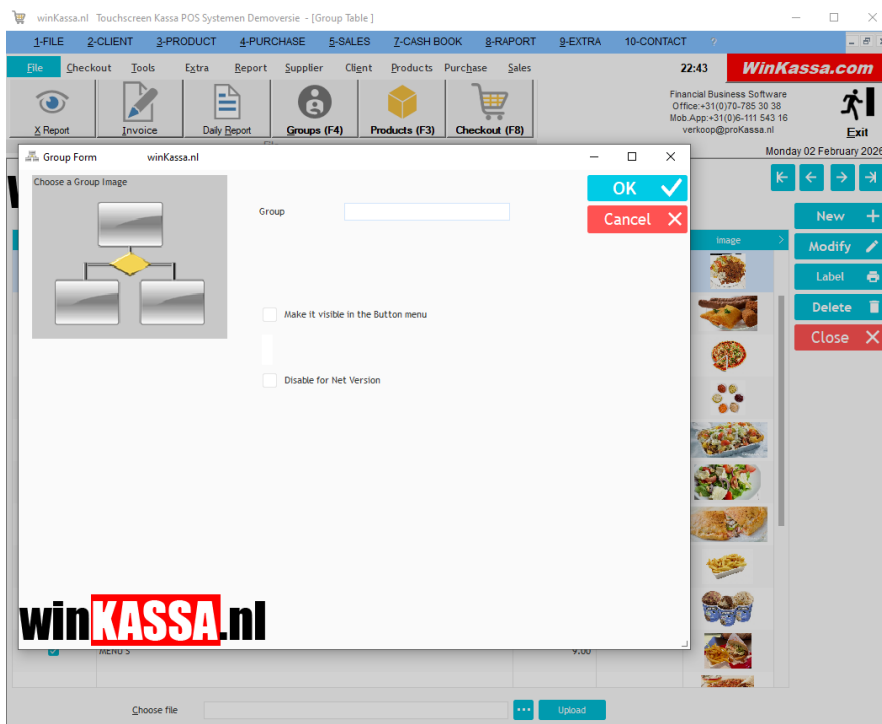
- Select your USB printer
- Activate using **Activate USB Printer**
- To show VAT rates on receipts, enable:
 - **Visible VAT rate on Ticket**

Save changes with **F5** or **OK**

10. Create Product



Groups



1. Click the **Group** button on the main screen
2. Click **New** on the right
3. Enter group details

For products without barcodes:

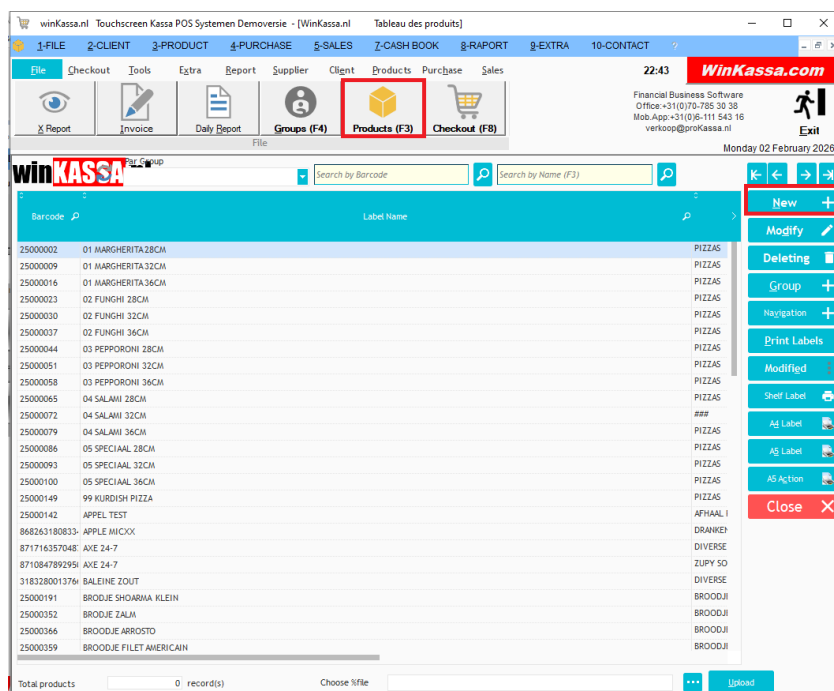
- Enable **Make visible in the button menu**

Add a group image:

- Click **Choose a Group Image**
- Select an image from your computer

Save using **F5** or **OK**

11. Add Products



The screenshot shows the 'Product Form' in the WinKassa.nl application. The form is divided into several sections. At the top, there are navigation tabs: 1-FILE, 2-CLIENT, 3-PRODUCT, 4-PURCHASE, 5-SALES, 7-CASH BOOK, 8-RAPORT, 9-EXTRA, and 10-CONTACT. Below these are icons for X Report, Invoice, Daily Report, Groups (F4), Products (F3), and Checkout (F8). The main form area has a 'General' tab selected. It contains fields for 'ID', 'Barcode', 'Caption', 'Order Nr', and 'GTIN (EAN, ISBN)'. There are also checkboxes for 'Weight Product' and 'New Line'. A red arrow points to the 'Group' field. Below this, there are sections for 'Automatic update of the purchase price', 'Buying Price Excl.', 'VAT %', 'Sale Price Excl. VAT', 'VAT Amount', 'Marge %', 'Recommended price', 'Kilo Price', 'Purchase Price+VAT', 'Earnings amount', and 'Sales price with TAX'. The 'Sales price with TAX' field is highlighted with a red box. At the bottom, there is a 'Takeaway price' section with 'VAT', 'Marge%', 'Sale Price Excl. VAT', 'VAT Amount', 'Marge Amount', and 'Sales price with TAX' fields. The interface also shows a sidebar with buttons like 'New', 'Modify', 'Deleting', 'Group', 'Navigation', 'Print Labels', 'Modified', 'Shelf Label', 'Ad Label', 'AS Label', 'AS Action', and 'Close'.

1. Click **Product** on the main screen
2. Select **New**

Product details:

- Scan the barcode (appears automatically)
- Enter product name/description
- Select product group
- Press **F8** or click **Sales Price with TAX** to enter VAT-inclusive price

Bulk Import via Excel

- Import **50,000+** products without issues
- Contact support for assistance

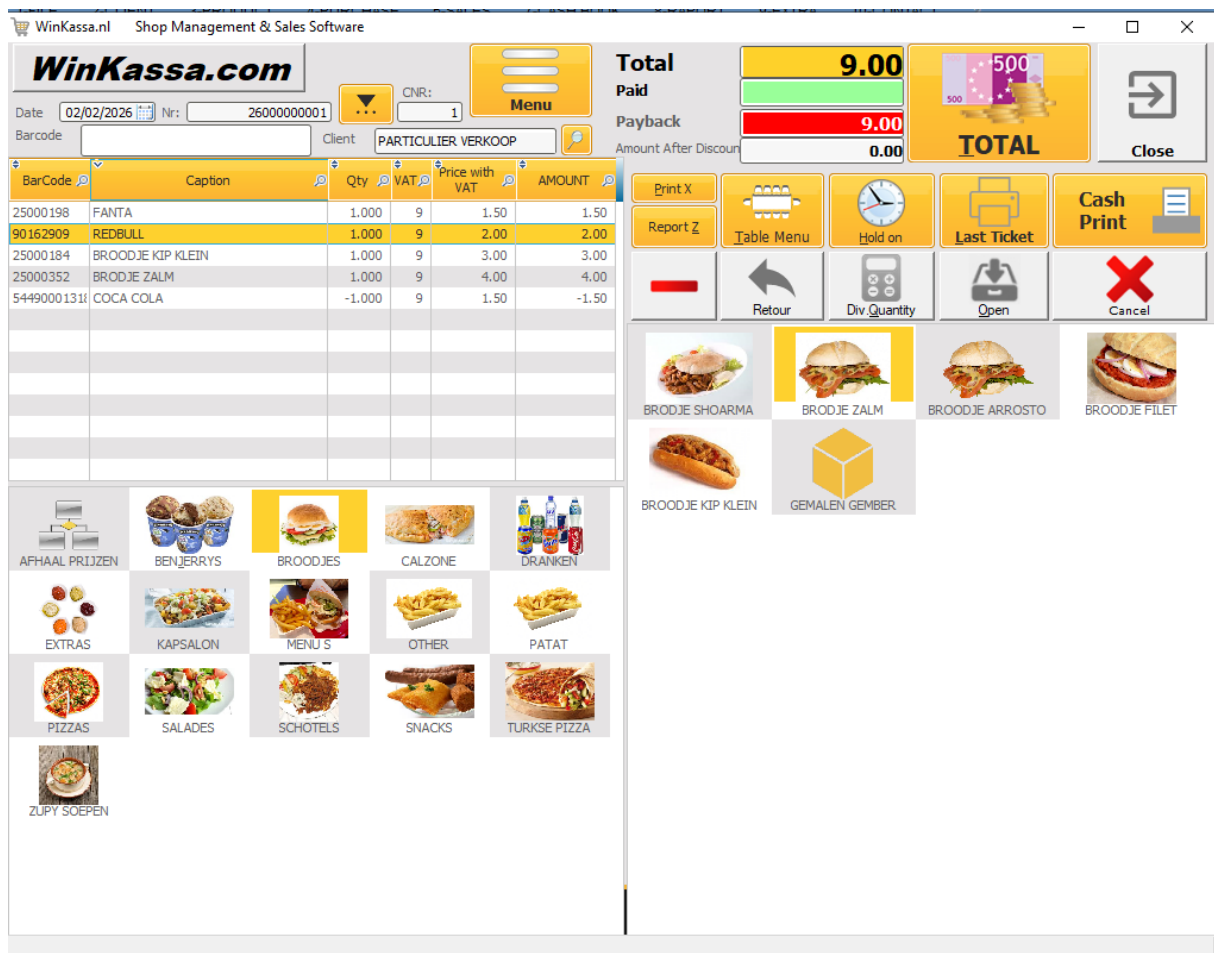
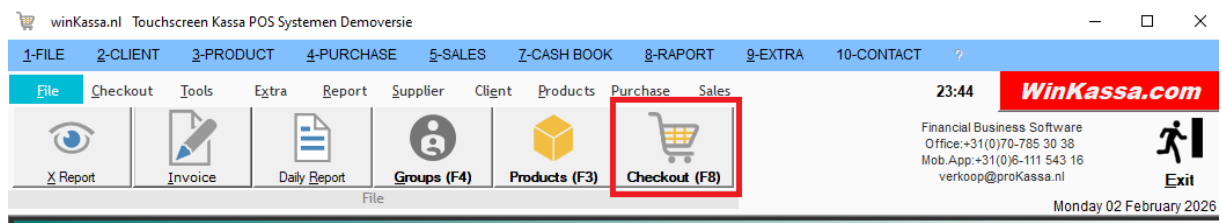
12. Sales Screen

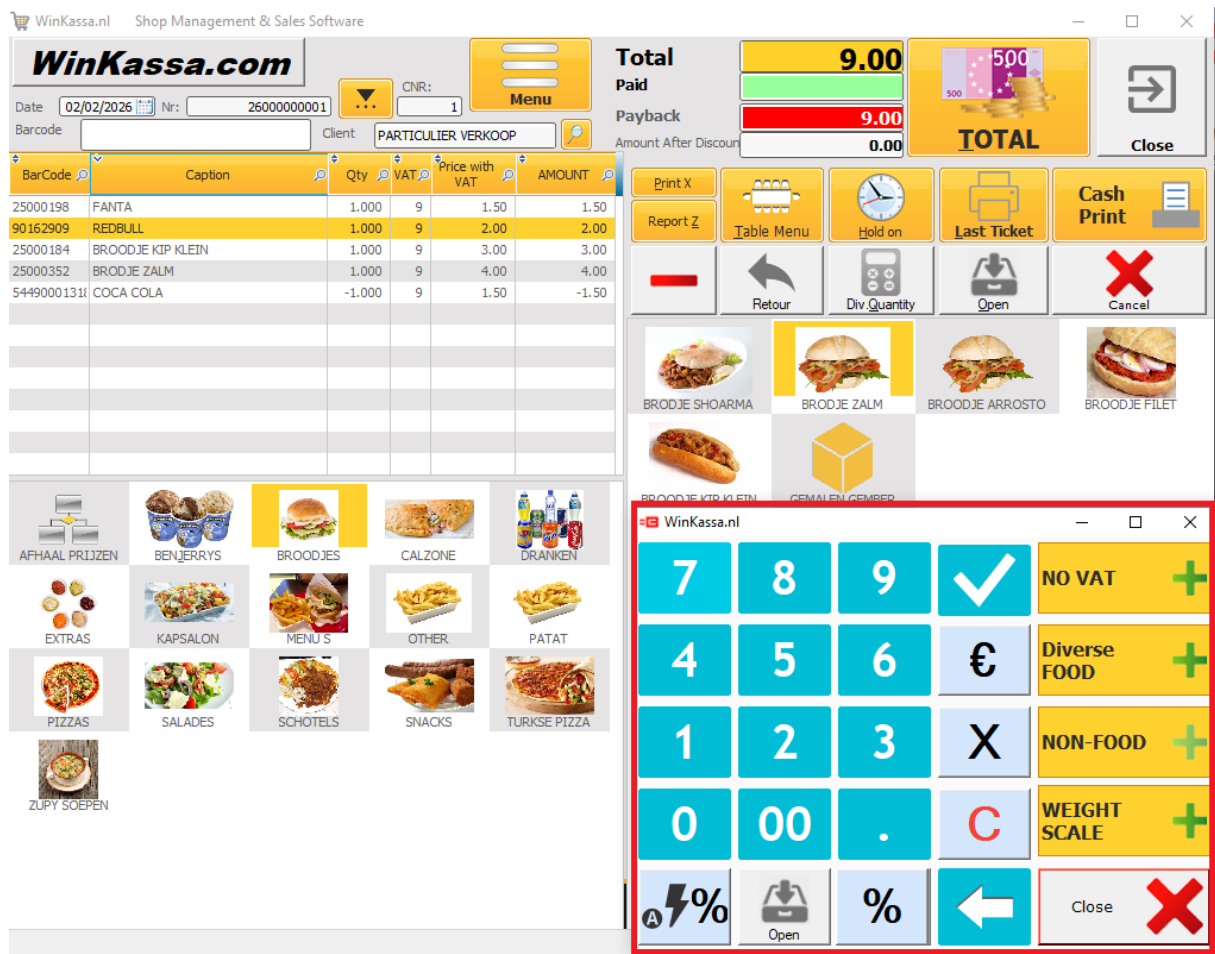
- Click the **Checkout** button to open the sales screen

Sales Functions

- Scan barcode: Adds product to the sales list
- Red (–) button: Remove selected product
- **Return:** Process product returns
- **OPEN:** Open cash drawer
- **X Cancel:** Clear sales table
- **Hold On:** Put transaction on hold
- **Last Ticket:** Reprint last receipt
- **Total:** Proceed to payment
- **Quantity Calculator:**
 - Change quantity or price
 - Add manual products not in the system

13. Payment Screen





- Select **Cash** or **POS/Card**
- Change is calculated automatically
- For mixed payments:
 - Enter cash amount first
 - Then select POS payment
- **CE** clears the current entry

Cash Button

- Use only if the customer pays the **exact amount**

After Payment

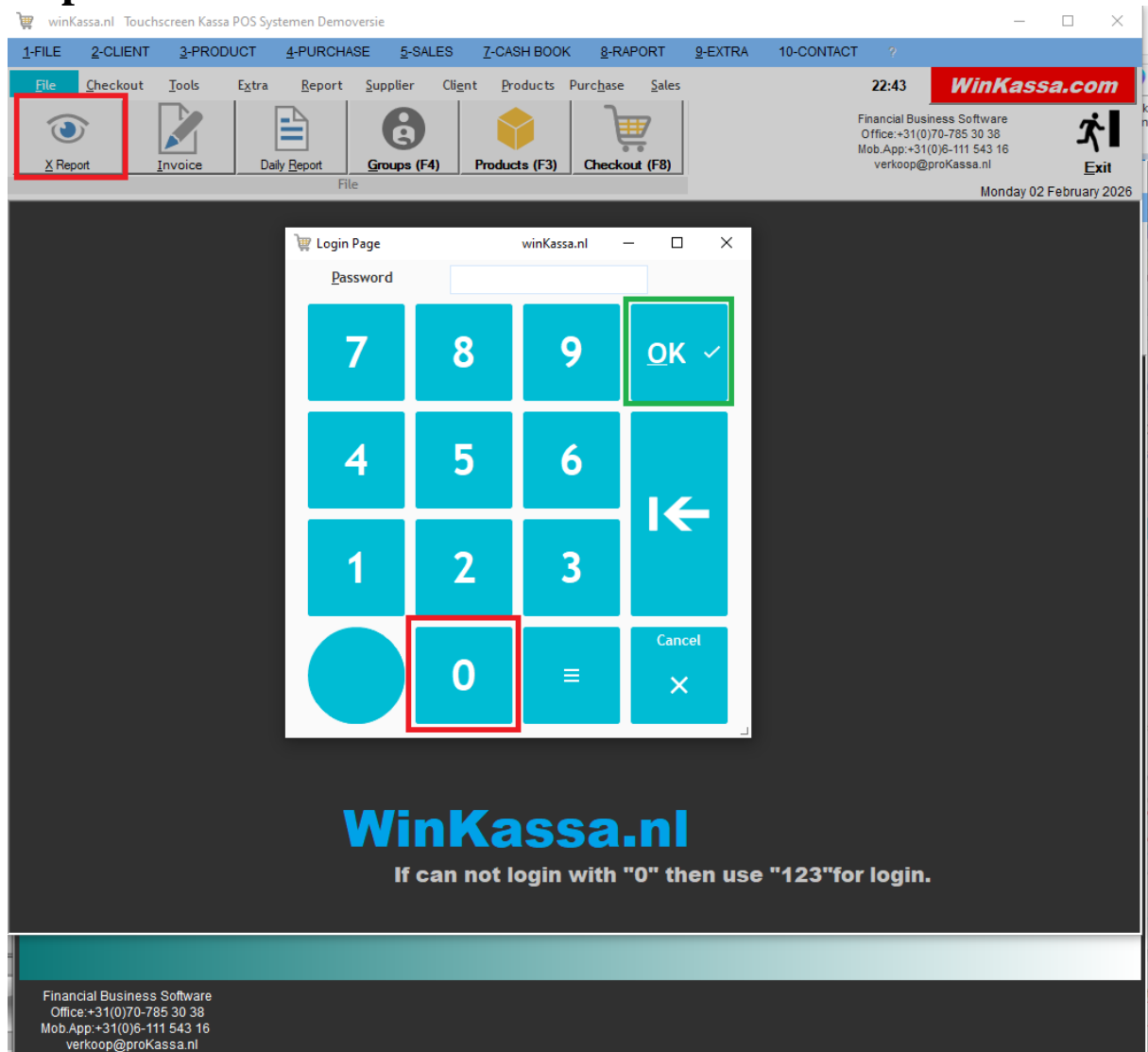
- **Print:** Print receipt
- **Save:** Save receipt
- **Cancel:** Return to sales screen

Example:

If the total is €5.20 and the customer gives €10.20:

- Enter **0.20** first
- Change returned will be **€5.00**

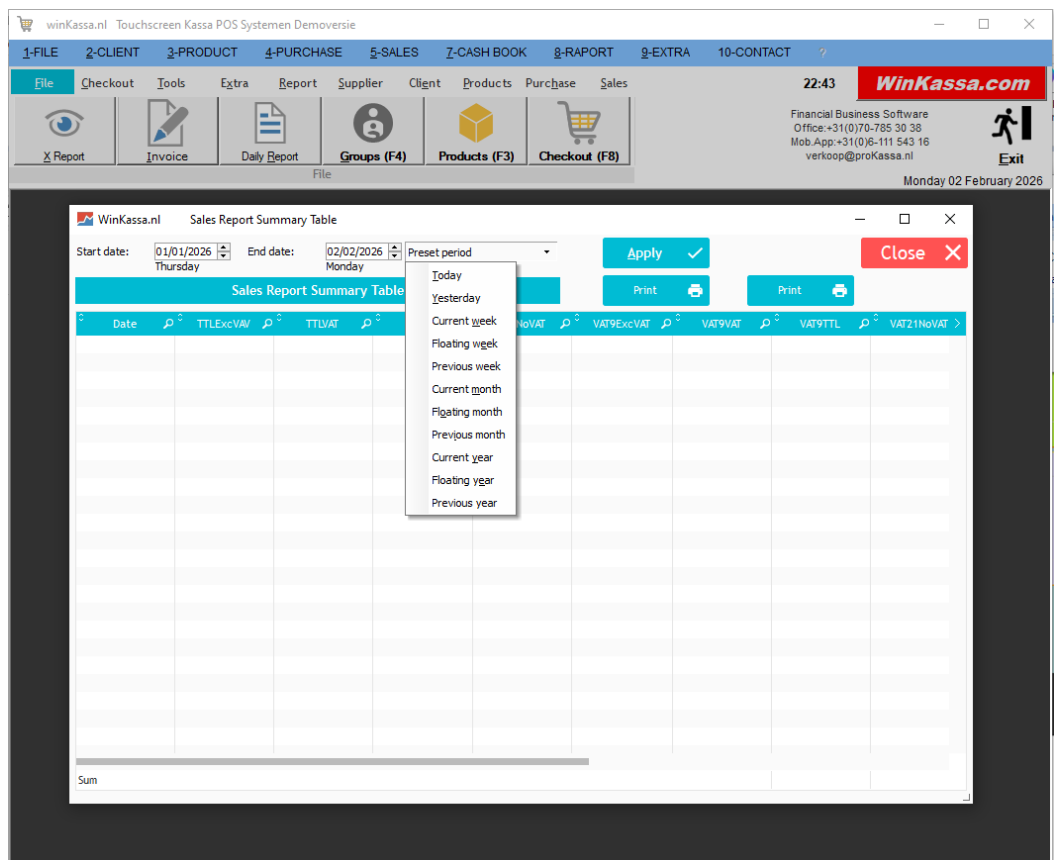
14. Reports

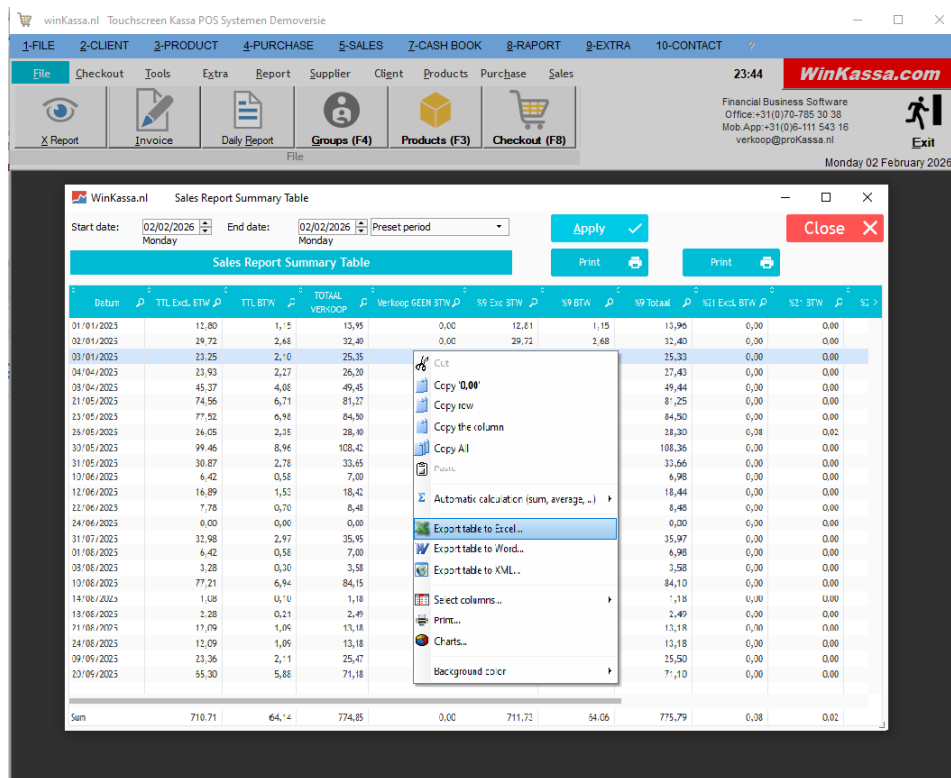


X Report (Sales Summary)

- Login code: 0 or 123

Menu path:





- 8 – Overview
- 5 – Sales
- 3 – Sales Report Summary

Features:

- Monthly or quarterly accounting reports
- Right-click to export to **Excel**

15. Suggestions and Advanced Versions

For suggestions or feedback, please contact us.

For large stores, multiple checkout points, and unlimited scalability:

- **WinKassa.nl**
- **WinRetail.nl**

Key features:

- European scale integration (10 brands)
- Cash drawer support
- Digital price labels
- Powerful, unlimited POS software

verkoop@prokassa.nl or visit <https://prokassa.nl/>